

Song



Danny Simpson
Nov. 12, 1974
Teri

Danny Simpson Nov. 12, 1974 Teri

Handwritten musical notation on four staves, featuring chords and melodic lines. The notation includes various chord symbols and melodic fragments.

Staff 1: Chords: A, D, $f\#m7$, $f\#m7/2$, $D\#$, $A\#$, E , A. Melody: $\text{B} \sharp \sharp$ 4/4.

Staff 2: Chords: D, $b m$, $b m/A$, E , E , D. Melody: $\text{B} \sharp \sharp$ 4/4.

Staff 3: Chords: A, D, A^4 , $F\#$, $b m$, E, D. Melody: $\text{B} \sharp \sharp$ 4/4.

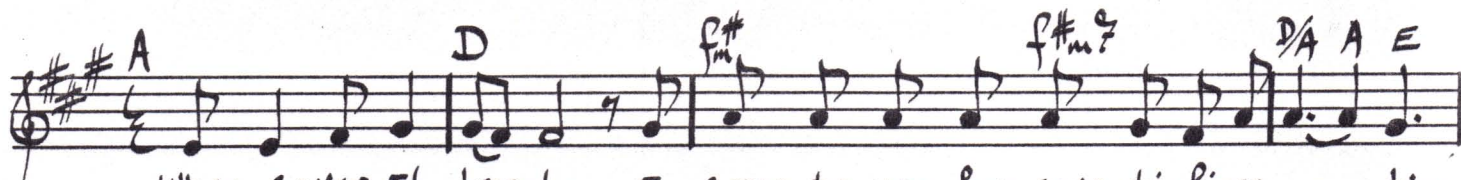
Staff 4: Chords: A, $A\#$, E, $b^{\flat} 4/3$, $f\# m$, $f\# m/2$, D, $A\#$, E. Melody: $\text{B} \sharp \sharp$ 4/4.

Annotations: "Nov 13, 1974" and "Reinstrumentation" are written near the bottom staff.

Offertory Song

Dad's now died (Aug 31)

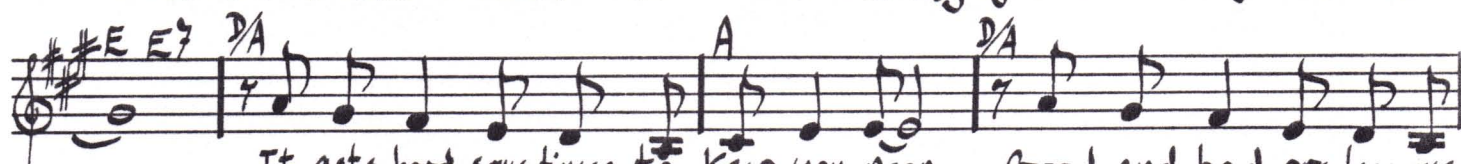
Nov. 1974



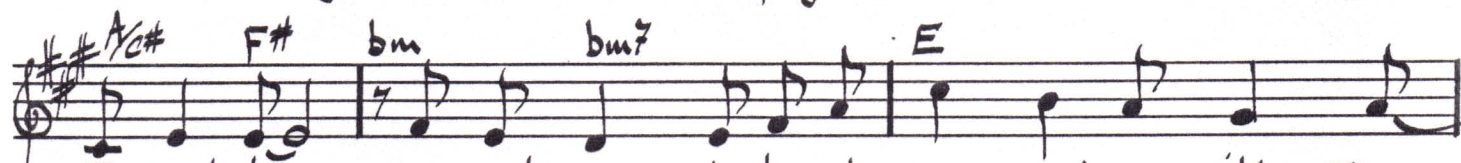
When e-ver I'm lone-ly I come to you for sanc-ti-fi-ca - tion



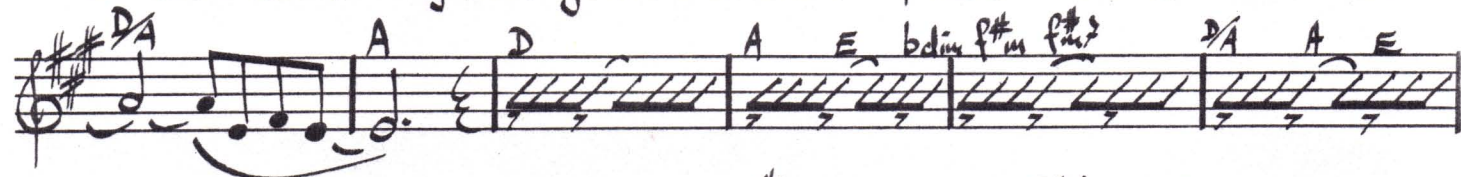
I see no diff-rence be-tween us In see-ing you I re-cog-nize me



It gets hard some-times to keep you near Good and bad are less-ons



I must learn my soul yearns to be at peace and one with Thee



When I was much young-er I ne-ver knew ex-act-ly where to find you



I only knew you were near me we start-ed out to-gether a-lone



Alpheus Music Corp
Hollywood, Calif.

M-120

© 1988

Daniel Z. Simpson

I can see that you are with me now I look deep in-to your
 lov-ing eyes I real-ize you're all the life I have in me
 When e-ver I'm work-ing I call on you for in-spir-a - tion
 I bare-ly know my sur-round - ings I'm think-ing of one thought at a time
 Reach-ing out to where you'll let me in come-ing home to find you
 wait-ing there This is where I glad-ly give my-self to Thee
 This is where I glad-ly give my-self to Thee



Whenever I'm lonely
I come to you for sanctification
I see no difference between us
In seeing you I recognize me
It gets hard sometimes to keep you near
Good and bad are lessons I must learn
My soul yearns to be at peace and one with Thee.

When I was much younger
I never knew exactly where to find you
I only knew you were near me
We started out together alone
I can see that you are with me now
I look deep into your loving eyes
I realize you're all the life I have in me.

Whenever I'm working
I call on you for inspiration
I barely know my surroundings
I'm thinking of one thought at a time
Reaching out to where you'll let me in
Coming home to find you waiting there
This is where I gladly give myself to Thee
This is where I gladly give myself to Thee

Verse II

Women

Lead Vocal

Men

W I W YOUNG - ger I I N U K E X I W T F I N D Y O U I

W I W YOUNG - ger I I N U K E X I W T F I N D Y O U

K I W N E A R

W S T A T I O N E

I C G T Y O U A W M N I L D I

I C A N S E E Y O U W I T H M E N O W I L O O K

T Y L U

L I H I M E

I N T O L O V - I N G E Y E S A L L T H E L I H I M E

Verse II

when
eu I working
I COY FAW spira-tion
IBIK

I COY FIS A tion

w
eu Iw King
I C For In spira-tion
IBIK

w I aw
one t Aa Time

r WIA In T Kootat

Score:

Offer tory

Dec 25, 1974

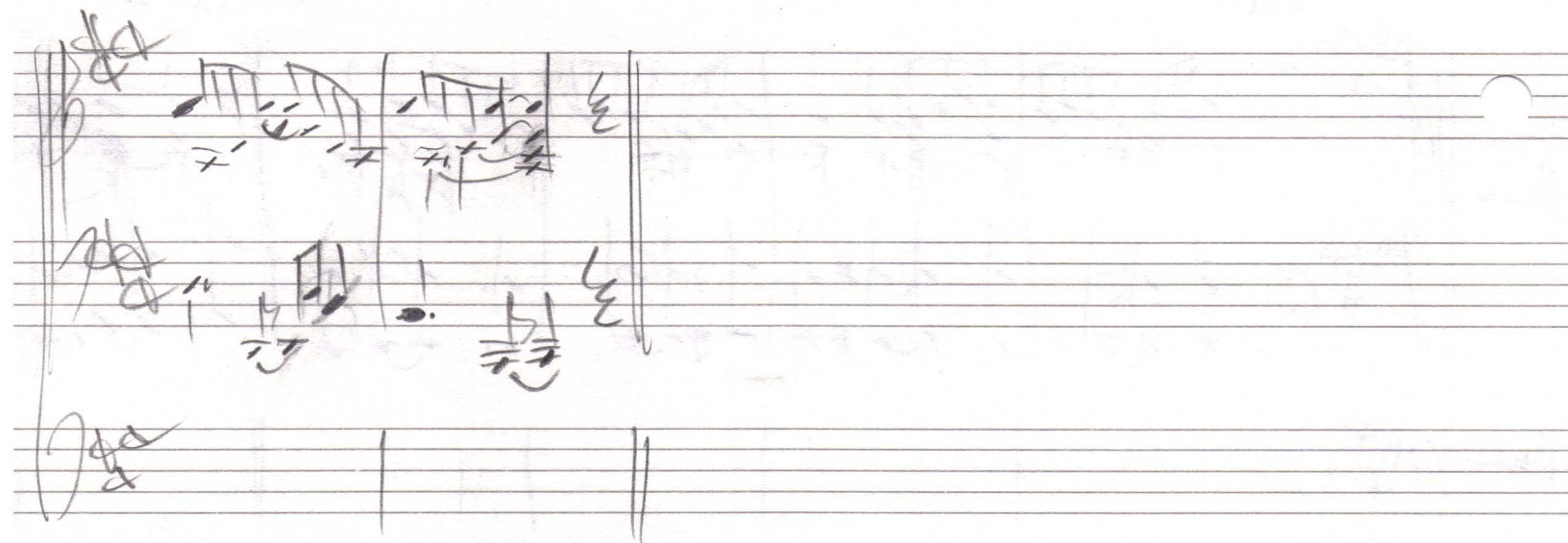
Intro:

Verse I + II

Handwritten musical score for the Intro and Verse I + II. The score is written on three staves. The first staff is labeled "Intro" and the second staff is labeled "Verse I + II". The music is in 4/4 time and features a key signature of one sharp (F#). The notation includes various musical symbols such as notes, rests, and bar lines.

Handwritten musical score for the Verse 2. The score is written on three staves. The first staff is labeled "Verse 2". The music is in 4/4 time and features a key signature of one sharp (F#). The notation includes various musical symbols such as notes, rests, and bar lines.

Handwritten musical score for the Verse 3. The score is written on three staves. The first staff is labeled "Verse 3". The music is in 4/4 time and features a key signature of one sharp (F#). The notation includes various musical symbols such as notes, rests, and bar lines.



Andor

Offertory

Jan 3, 1975

Intro:

All down

Sustain

Verse 1+2

BURV

BURV

BURV

Sim.

Sim

Flute I & II

Offertory

Jan 30, 1976
Morning

Intro
Spacer after Verse 1.

Verse 1.

Intro
Spacer

Spacer

(over)

~~Flute~~ ^{cont.}
(Charles de la Brie)

Mar 15, 1965

pg 2

Sing both the Joy within his name

verse 3.

verse 4.

Handwritten musical score on ten staves. The notation includes various musical symbols such as clefs, time signatures, notes, rests, and bar lines. The score is written in ink and shows signs of being a working draft, with some corrections and annotations. The lyrics "Sing both the Joy within his name" are written above the first staff. The score is divided into sections labeled "verse 3." and "verse 4.".

Bells

Flourish

arr
1876
H. 10/10/10
M. 10/10/10

Handwritten musical notation on a five-line staff. The key signature has one sharp (F#) and the time signature is 4/4. The notation consists of a series of vertical strokes, some with flags, indicating a rapid sequence of notes. A '2' is written above the first measure, and a '1.' is written below the second measure.

Handwritten musical notation on a five-line staff, continuing the sequence of vertical strokes. A '2' is written above the first measure, and a '2.' is written below the second measure.

Handwritten musical notation on a five-line staff. The notation includes vertical strokes and some notes with stems. A '4' is written above the first measure, and a '1' is written above the second measure.

Handwritten musical notation on a five-line staff. The notation includes vertical strokes and notes with stems. A '3.' is written below the second measure.

Handwritten musical notation on a five-line staff. The notation includes vertical strokes and notes with stems.

Handwritten musical notation on a five-line staff. The notation includes vertical strokes and notes with stems. A '1.' is written above the first measure, and a '2.' is written above the second measure.

Handwritten musical notation on a five-line staff. The notation includes vertical strokes and notes with stems.

Piano. Vocal

Offertory

Aug 13, 1948
9:00 AM
Saturday

Piano

Handwritten musical score for Piano and Voice. The score is written on multiple staves. The piano part is indicated by a circled 'P' and the voice part by a circled 'V'. The score includes various musical notations such as notes, rests, and dynamic markings. There are several annotations and corrections throughout the score, including a circled 'X' and a circled '25'. The score is dated August 13, 1948, at 9:00 AM on a Saturday. The title of the piece is 'Offertory'. The score is written in ink on a piece of paper that has some staining and wear.

see back of pg. 2 for insert

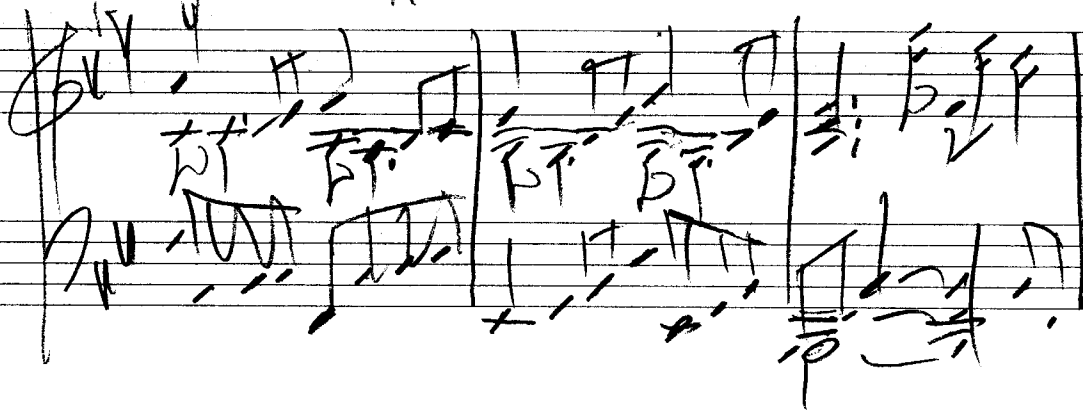
see back of pg. 2 for insert
3:10 PM

262 Sunday
1 August
1977

Handwritten musical score on ten staves. The notation includes various musical symbols such as notes, rests, and bar lines. There are several annotations and markings throughout the score:

- A circled number "40" is written in the middle of the third staff.
- A circled number "6" is written in the bottom left corner of the page.
- A circled number "66" is written in the bottom right corner of the page.
- A yellow speech bubble containing three horizontal lines is located near the bottom right of the page.
- Handwritten notes in the bottom right corner include: "10:35 AM", "fine", "O matter", "still here", "church at 2:00", and "today".

Aug 19, 13 7⁴
9:35 AM





Offertory Song

Daniel Simpson
Tucson, AZ
Bowes Rd.
Nov. 1974

con motto ♩ = 140



12

21

25

29

33

f

mp

cresc.

mp

37

cresc. *f* *decresc.* *mp*

41

f

45

mp *p* *f*

49

mp *cresc.*

53

mp

57

61

trio

65

69

trio cresc.

73

f